



带卡栓锁紧  
With bayonet locking.

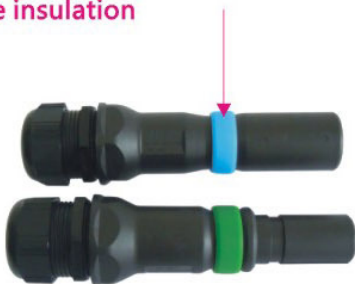
采用特殊弹片  
Adopt special shrapnel



在未插合状态下防触摸保护  
Touch protected in unplugged condition



绝缘层上清晰可见的颜色标记  
Clearly visible colour marking  
on the insulation



插合状态下IP65  
IP65 in mated condition



可以配备一个微动开关显示锁紧状态  
Can be equipped with a mi-crowitch  
as locking status in-dication  
(according to IEC 61948)



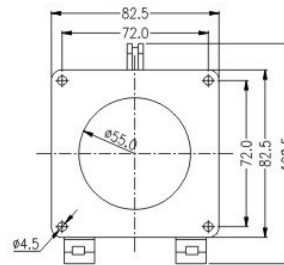
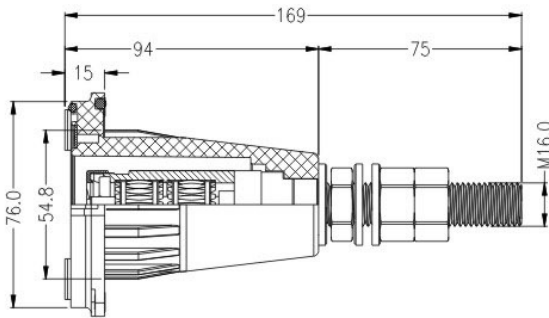
#### I 技术参数 Technical Parameters

额定电流 (安培) / Rated current (Amperes)	600A
额定电压 (伏特) / Rated voltage (Volts)	1000V
连接线径尺寸 (AWG) / Contact Barrel Wire Size (AWG)	150~240mm <sup>2</sup>
接触材料 / Contact material	铜、镀银copper Plate with silver
绝缘材料 / Insulation material	PA
防火等级 / Flammability	UL94 V-0
寿命/Life a.空载状态 (连接/断开次) Without load (Contact/Disconnect Cycles) b.负载状态 (热插拔250&120V) With Load (Hot Plug 250 Cycles& 120V)	To 5,000 NO
接触电阻(微欧) / average Contact Resistance(micro-ohms)	12
绝缘电阻 / Insulation Resistance	5000MΩ
平均插拔力(牛顿) / average. Connection\disconnect(N)	200N
环境温度 (°C) / Environment Temperature (°C)	-20°C...+75°C
耐压/ Insulation Withstanding Test Voltage(Volts AC/DC)	3000V AC

#### I 板端工业连接器/Board interface industrial connector

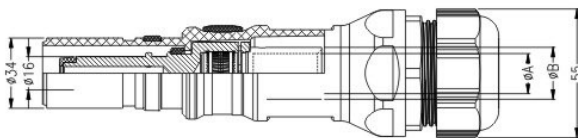


插头料号 Socket P/N	颜色标记 coloured marking
FIC600B01-*A	颜色 Colours 



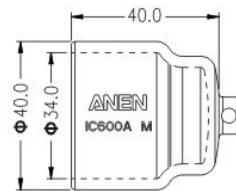
钻孔图  
Drilling plan

#### I 线端工业连接器 Wire interface industrial connector



#### I 配件/Accessories

保护盖 Protective cover



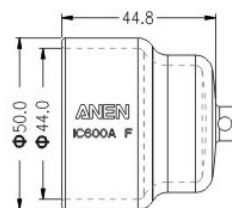
插头料号 Plug P/N	导体截面积(mm <sup>2</sup> ) Conductor cross section (mm <sup>2</sup> )	压接套内径ΦA (mm) DimensionsΦA(mm)	压接套外径ΦB (mm) DimensionsΦB(mm)	颜色标记 coloured marking
FIC600M01-*A	150mm <sup>2</sup>	19.0	25.0	
FIC600M02-*A	185mm <sup>2</sup>	21.0	27.0	
FIC600M03-*A	240mm <sup>2</sup>	24.0	30.0	

#### I 线端工业连接器/Wire interface industrial connector



#### I 配件/Accessories

保护盖 Protective cover



插头料号 Plug P/N	导体截面积(mm <sup>2</sup> ) Conductor cross section (mm <sup>2</sup> )	压接套内径ΦA (mm) DimensionsΦA(mm)	压接套外径ΦB (mm) DimensionsΦB(mm)	颜色标记 coloured marking
FIC600F01A	150mm <sup>2</sup>	19.0	25.0	
FIC600F02A	185mm <sup>2</sup>	21.0	27.0	
FIC600F03A	240mm <sup>2</sup>	24.0	30.0	