

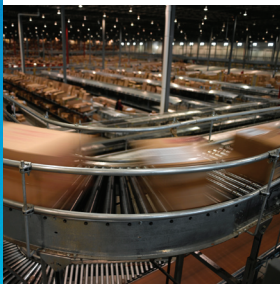
CSN950 Dimensioner

Setting New Standards



Highest Read-Rate

The large optics and high laser sensitivity of the CSN950 allow it to measure a greater range of items with high precision. The CSN950 handles difficult-to-measure surfaces, such as black, blue and reflective covering, with ease for maximum revenue recovery.



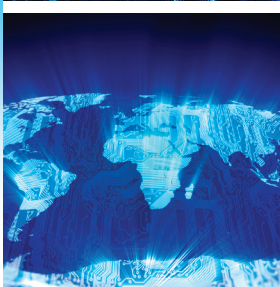
Embedded Processor

All data processing and host communication software is run inside the dimensioner providing a powerful, lean solution. The CSN950 maintains high accuracy in challenging measuring conditions and at high speeds.



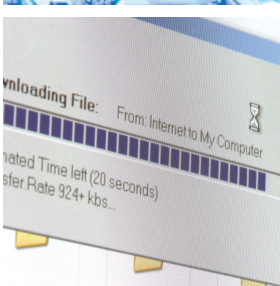
Advanced Connectivity

Barcode readers, cameras, scales and sorters can be directly connected to the CSN950. Embedded OCTO DataCapture™ Software manages data from all components, transforming your dimensioner into a turn-key data capture solution.



Global Standard

With a 24 volt power supply, the CSN950 can be used in all corners of the world. Operating in temperatures from -10 to +50°C, with international regulation compliance, the CSN950 is a truly global product.



Designed for the Future

The modular design of the CSN950 meets current and growing demands. Should data capture requirements change, both hardware and software are easily upgraded.



CSN950 Dimensioner

Superior Measuring Performance

With improved precision, larger optics and a powerful, embedded processor, the CSN950 provides the greatest read rates, and highest precision in its class for maximum revenue recovery.

At home in any sorting environment, the CSN950 measures accurately over tilt trays and cross belts at high speeds. Seamless connectivity to barcode readers, scales, sorters and cameras make the CSN950 the answer to optimizing operational standards and preparing for future investment.

Technical data

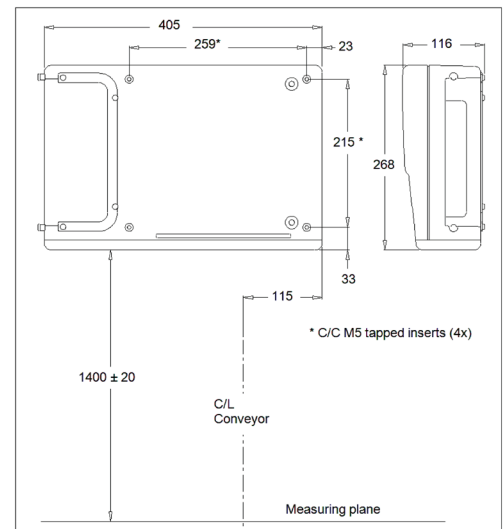
CSN950 Dimensioner

Dynamic parcel measuring

Typical mounting height for legal-for-trade applications

Features and benefits

- Large, uniquely sensitive optics for maximum precision and read rate
- Powerful embedded processor - no external controller
- Directly connects with bar-code readers, cameras, scales and sorters
- Measures accurately at high and low speeds - nothing missed during belt stops
- Forward and reverse measuring
- Measures over cross-belt and tilt-tray sorters
- Detects and reports touching items to aid package flow
- Provides orientation data for correct sorting and tracking
- Irregular code for identifying damages and improper packing
- Secure data transfer to customer host
- Remote diagnostics for easy upgrades and service
- Graphical user interface for quick system configuration, statistics and status reports



*Measurements in mm

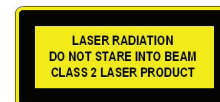
Legal for trade approvals

Specification	NTEP (12-037P)	MC (AM-5869C)	MID (12-1977)
Min. size (LxWxH)	2.4" x 2.4" x 1.2"*	2.4" x 2.4" x 1.2"	50 x 50 x 20 mm
Max. size (LxWxH)	146" x 48" x 36"	145" x 35" x 35"	4000 x 900 x 900 mm
Certified scale value (d)	d=0.1" Height, d=0.2" Length & Width	d=0.1" Height, d=0.2" Length & Width	d=2mm Height, d=5mm Length & Width
Accuracy	± 0.1" Height, 0.2" mm, Length & Width	± 0.1" Height, 0.2" mm, Length & Width	± 2 mm Height, ±5 mm, Length & Width
Object shape	Cuboidals		
Belt speed	0 - 650 ft/min	0 - 650 ft/min	0 - 3.33 m/s
Speed variable	Variable speed, measures down to 0 m/s (ft/min)		
Spacing	Singulated, non-singulated, side-by-side detection		
Display	Host output or Simple display	Octo CSM on graphics (VGA) monitor	CS2200, OctoCSM (VGA), AMS viewer
Power Supply	24VDC, 100 VAC to 240 VAC		
Sealing	Category 3	Electronic and physical sealing	Electronic sealing

Enclosure / Environment	
Housing Material	Aluminium
Operating Temperature	-10 to +50°C (14 to 122°F), Start condition 0°C (32°F)
Humidity	Up to 100%, non-condensing
Level	-2000m / NN Indoors
Aperture angle	82°
Power	24 VDC ±15%
Power consumption	40 W
Fuse	ATO/FKS 4A
Product Dimensions (LxWxH)	12x41x26 cm (5x16x10")
Weight	9kg (20lbs)

Regulatory Compliance / Approvals	
Light Source	Laser diode, red, wavelength 660nm
Laser	Class II (2)
OIML	R129 Compliant

Data Interfaces	
Connectivity	DVI-I, 4 x USB, 2 x Ethernet, Tacho In, Tacho Out, Serial, Binary I/O



*See approval certificate for single/multi interval thresholds.

Please note that values may vary depending on type of sorter and site frame conditions



MID, NTEP and Measurement Canada certificates
Compliant to health and safety regulations
Internet: <http://www.mt.com>
Worldwide service
Quality certificate ISO9001

Subject to technical changes
©04/2013 Mettler-Toledo Cargoscan AS
Printed in Norway
CSN MarCom Oslo

www.mt.com/CSN950

Visit for more information