

東莞市金而特電子有限公司
DONGGUAN KAM ER TE (KET) ELECTRONIC CO., LTD



KET簡介Introduction

1. 東莞市金而特電子有限公司于2005年在東莞市成立。

DG KET Electronic Co., Ltd was established in Dongguan City in 2005.

2. 金爾特(香港)投資有限公司于2005年在香港成立。

KET(Hongkong) Investment Co., Ltd was established in Hongkong in 2005

3. 金而特主要業務是EMS、OEM 客戶製造產品及提供售後服務以滿足客戶的需要, 主要客戶來自臺灣、香港、日本、法國、美國、德國、俄羅斯等。

KET's principal business are manufacturing product for EMS, OEM customer and providing after-sale service to satisfy customer's demand. The customers come from Taiwan, Hongkong, Japan, France, America , Germany, Russia etc.

4. 主要生產電子產品: USB Hub, 讀卡機, HDMI 高清切換器, 全球衛星定位系統(GPS), LED 應急燈, 迷你音響, 等。

KET mainly to product the various electronic products, such as, USB Hub, Card reader, HDMI Converter, GPS, LED emergency light, and Mini-Hi Fi. etc.

5. 品質體系: 已經通過ISO9001:2008認證。

KET acquired ISO 9001:2008 Certificate for the quality system.

Company Concept

Business philosophy: pragmatic management, quality service, honesty and mutual development.

Quality Policy: scientific management, continuous improvement to utmostly meeting customers' requirements.

Enterprise spirit: respect, mutual help, learning, dedication, and improvement.

Values: Company is the common community of all staff's benefit, career and destiny.

Vision: build loyal partnership with customers.



佔地面積 : 3500平方米
Cover area: 3500 sq.m.

廠房面積 : 4500 平方米
Plant area: 4500 sq.m.

全廠總人數約 : 100人
Factory headcount approximately : 120staffs

年產值: 1000萬美元
Year revenue : 10 million USD

Main Customers

JABIL

Z-TEK[®]

TRW
Automotive

CHERRY 

TaiSol ^E

lenovo. |

AEM

 **VIDBOX[®]**

- **SMT equipment:**
- **〈Line1〉 :Automatic PCB feeder+GKG-G2 sold paste printer + Panasonic(BM123)+JT wave soldering machine(GS-800)**
- **〈Line2〉 :Automatic PCB feeder+GKG-G2 sold paste printer + Panasonic(BM123)+JT wave soldering machine (GS-800)**
- **〈Line3〉 :Automatic PCB feeder+GKG-G2 sold paste printer + Panasonic(BM123)+JT wave soldering machine (GS-800)**
- **〈Line4〉 :GKG-G2 sold paste printer + Yamaha(YS24)+ Panasonic (BM123) + JT wave soldering machine (GS-700)**

Total SMT production capacity:190 million points/day

SMT Workshop





Assembly Line

Testing Equipment



Automatic Optic Inspection



Function Test



BGA rework center

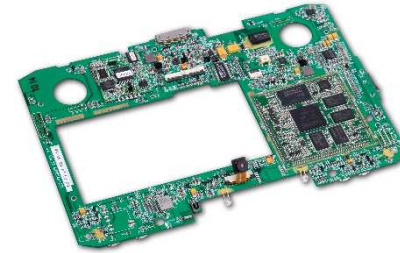
Product show



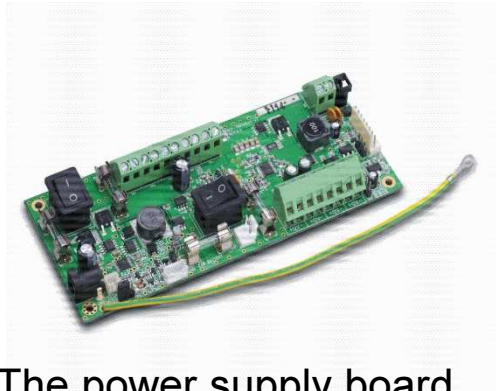
Computer motherboard



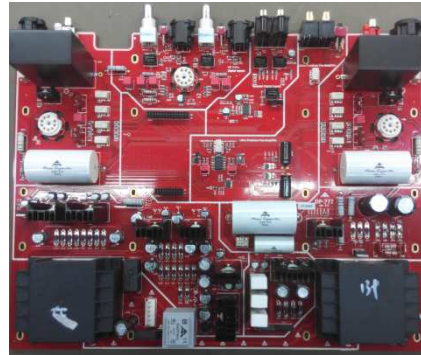
Network mainboard



Tablet



The power supply board



Audio power amplifier Board



Mainboard for internet server

Product show



GPS For car



ACCESS DEVICE



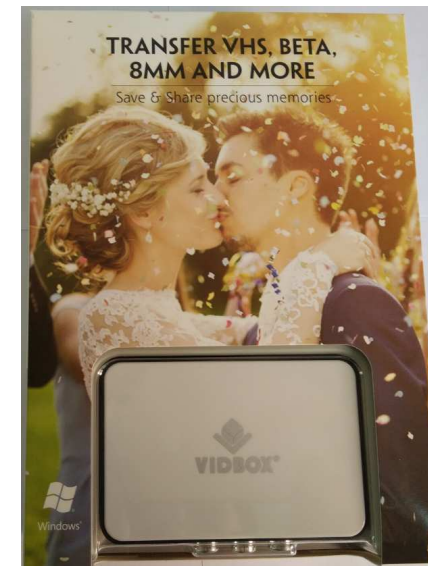
POS device



Air pressure
monitor for car tire



Emergency call
system for building



VIDBOX



Warehouse for Electron Parts

THANK YOU !