

6A,600V-1000V 玻璃钝化整流桥 6A,600V-1000V Glass Passivated Bridge Rectifier

■特征 Features

- 玻璃钝化芯片
Glass passivated chip
- 低反向漏电流
Low reverse leakage current
- 130A 高耐浪涌电流能力
High surge current capability to 130 Amperes
- UL 档案编号# E249161
UL recognized file # E249161
- 符合 RoHS 指令 2011/65/EU
Compliant to RoHS directive 2011/65/EU

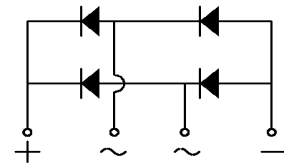
关键参数 KEY PARAMETERS		
参数 PARAMETER	数值 VALUE	单位 UNIT
IF(AV)	6	A
VRRM	600-1000	V
IFSM	130	A
Package	KBL	

■应用范围 Applications

- 家用电器
Household electric appliances
- 工业电源
Industrial power supply
- 开关式电源
Switching mode power supply
- 通用单相桥式整流桥
General purpose single phase bridge rectifier

■机械参数 Mechanical Data

- 本体：塑封外壳
Case : Molded plastic case
- 极性：极性符号铸在管体上
Polarity: Polarity symbols being marked on body
- 重量：约 4.5 克
Weight : About 4.5 grams



■最大额定值 Maximum Ratings @ Ta = 25°C unless otherwise noted

参数 PARAMETER	符号 SYMBOL	KBL606	KBL608	KBL610	单位 UNIT
反向重复峰值电压 Maximum recurrent peak reverse voltage	V _{RRM}	600	800	1000	V
反向不可重复峰值电压 Reverse non-repetitive Peak Reverse Voltage	V _{RSM}	700	900	1100	V
平均整流输出电流 Average rectified output current	I _(AV)	安装在 PCB 板上, T _C =40°C with PCB board, T _C =40°C			A
最大正向浪涌电流, 10 ms 单半正弦波叠加在额定负载上 Peak surge forward current, 10 ms single half sine-wave superimposed on rated load	I _{FSM}	130			A
热容值, 1ms<t<10ms, T _j =25°C, 单个二极管 Rating for fusing, 1ms<t<10ms, T _j =25°C, Rating of per diode	I ² t	84.5			A ² s
结温 Junction temperature	T _j	-55~+150			°C
存储温度 Storage temperature	T _{STG}	-55~+150			°C

■电性特性 Electrical Characteristics @ Ta = 25°C unless otherwise noted

参数 PARAMETER	条件 CONDITIONS	符号 SYMBOL	额定值 RATED VALUE	单位 UNIT
正向峰值电压 Peak Forward Voltage	IF=6A, Tj=25°C	V _F	1.1	V
反向峰值电流 Peak Reverse Current	VR=VRRM, 脉冲测试, 单个二极管的额定值 VR=VRRM, Pulse measurement, Rating of per diode	I _R	Tj=25°C	5.0
			Tj=125°C	100.0

■热特性 Thermal Characteristics @ Ta = 25°C unless otherwise noted

参数 PARAMETER	符号 SYMBOL	额定值 RATED VALUE	单位 UNIT
结到环境的热阻 Junction-to-ambient thermal resistance	R _{θJA}	42	°C/W
结到壳体的热阻 Junction-to-case thermal resistance	R _{θJC}	15	°C/W

■特性曲线 Characteristic Curve

FIG.1 . Derating Curve For Output Rectified Current

图 1. 电流降额曲线

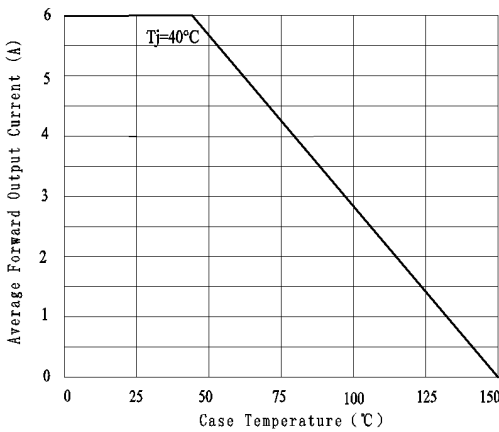


FIG.2 . Maximum Non-Repetitive Peak Forward Surge Current Per Bridge Element

图 2. 最大正向不重复峰值浪涌电流

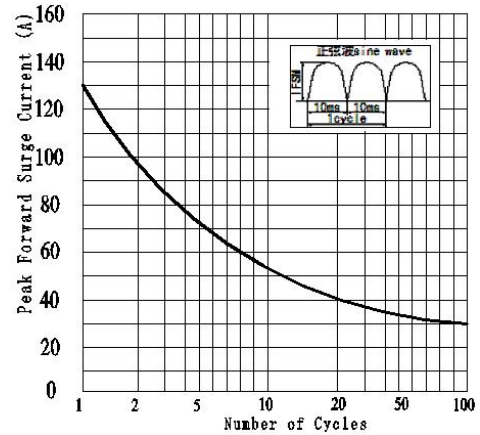


FIG.3. Typical Reverse Characteristics Per Bridge Element

图 3. 典型反向特性

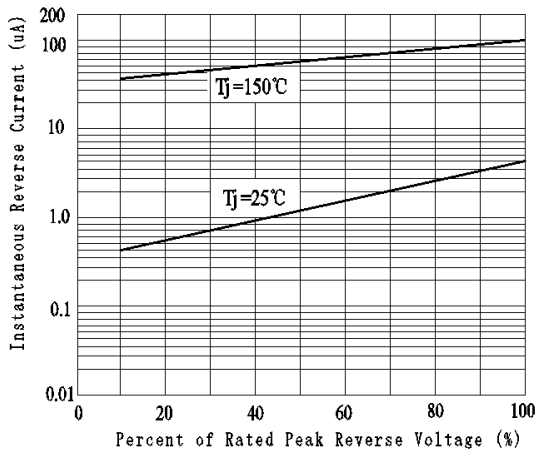
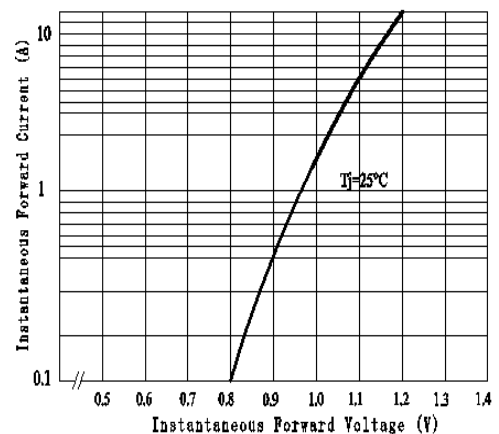


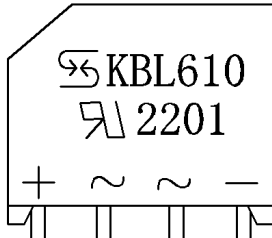
FIG.4. Typical Forward Characteristics Per Bridge Element

图 4. 典型正向特性



6A,600V-1000V 玻璃钝化整流桥
6A,600V-1000V Glass Passivated Bridge Rectifier

■ 标记图 Marking Diagram



☞: 希尔LOGO

☞: UL标识

KBL610: 标识代码

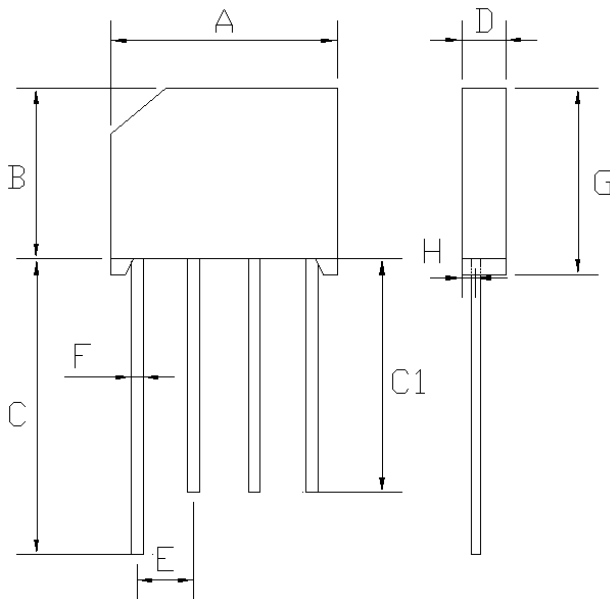
KBL: KBL系列

6: 额定电流6A

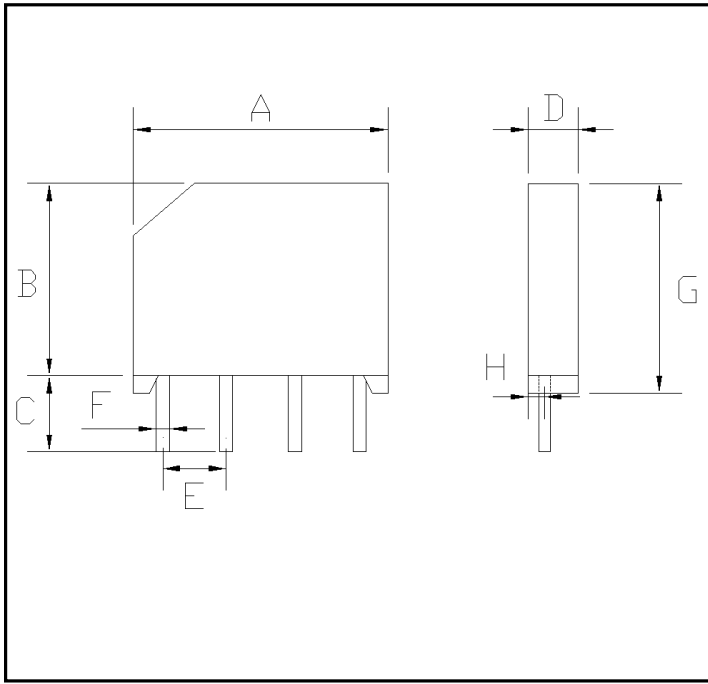
10: 电压1000V

2201:产品批次码

■ 尺寸图 Dimension Drawing



Dim	min	max
A	18.5	19.5
B	13.9	14.9
C	18.0	/
C1	15.0	/
D	5.5	6.5
E	4.6	5.6
F	1.2	1.3
G	15.2	16.3
H	1.6	2.0
Dimensions in millimeters		



Dim	min	max
A	18.5	19.5
B	13.9	14.9
C	4.3	4.9
D	5.5	6.5
E	4.6	5.6
F	1.2	1.3
G	15.2	16.3
H	1.6	2.0
Dimensions in millimeters		

Notice

Unless otherwise specified in the data sheet, the product is designed and qualified as a standard commercial product and is not intended for use in applications that require extraordinary levels of quality and reliability, such as automotive, aviation/aerospace and life-support devices or systems. Any and all semiconductor products have certain probability to fail or malfunction, which may result in personal injury, death or property damage. Customer are solely responsible for providing adequate safe measures when design their systems. Leshan Share Electronic Co., Ltd. reserves the right to improve product design, function and reliability without notice.

除非数据表中另有说明，该产品是作为标准商业产品设计和认证的，不用于要求非常高质量和可靠性的应用，如汽车、航空/航天和生命支持设备或系统。任何半导体产品都有一定的失效或故障概率，可能导致人身伤亡或财产损失。在设计系统时，客户单独负责提供足够的安全措施。乐山希尔电子股份有限公司保留权利，以改善产品的设计，功能和可靠性，恕不另行通知。